



2021 HURRICANE PREPAREDNESS TOWN HALL

WELCOME COMMANDOS!

2021 TROPICAL CYCLONE NAMES

ANA	HENRI	ODETTE
BILL	IDA	PETER
CLAUDETTE	JULIAN	ROSE
DANNY	KATE	SAM
ELSA	LARRY	TERESA
FRED	MINDY	VICTOR
GRACE	NICHOLAS	WANDA



Overview

- **Hurricane Overview** (23rd Special Operations Weather Squadron)
- **Hurricane Preparedness** (1 SOCES Emergency Management)
- **Claims and Preparation Tips** (Legal)
- **Evacuation Types, Orders, and Entitlements** (Finance)
- **How to Stay Informed** (Public Affairs)
- **Protecting Critical Information** (OPSEC)
- **Hurlburt Field Housing Q&A** (Corvias)
- **AFPAAS** (Installation Personnel Readiness)
- **Emergency Family Assistance Center** (Airman & Family Readiness Center)



23rd Special Operations Weather Squadron

HURRICANE SEASON

1 Jun – 30 Nov

New Orleans

Mobile

Pensacola

Briefers: SSgt Houston
SrA Glinski

100 km

Any Time...Any Place



Overview

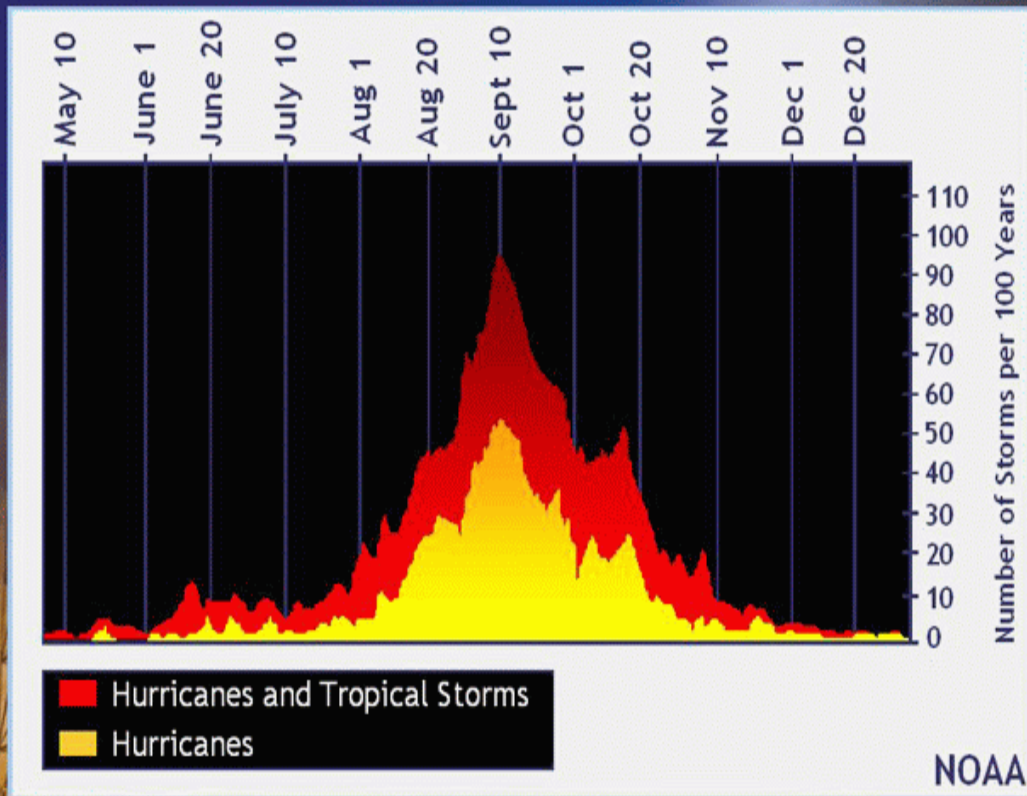
- **Tropical Cyclone Frequency**
- **Hurricane Formation**
- **Hurricane Forecasting**
- **Forecast Challenges**
- **Weather Sources**
- **Helpful Links**
- **Hurricane Sally Damages/Questions**



Tropical Cyclone Frequency



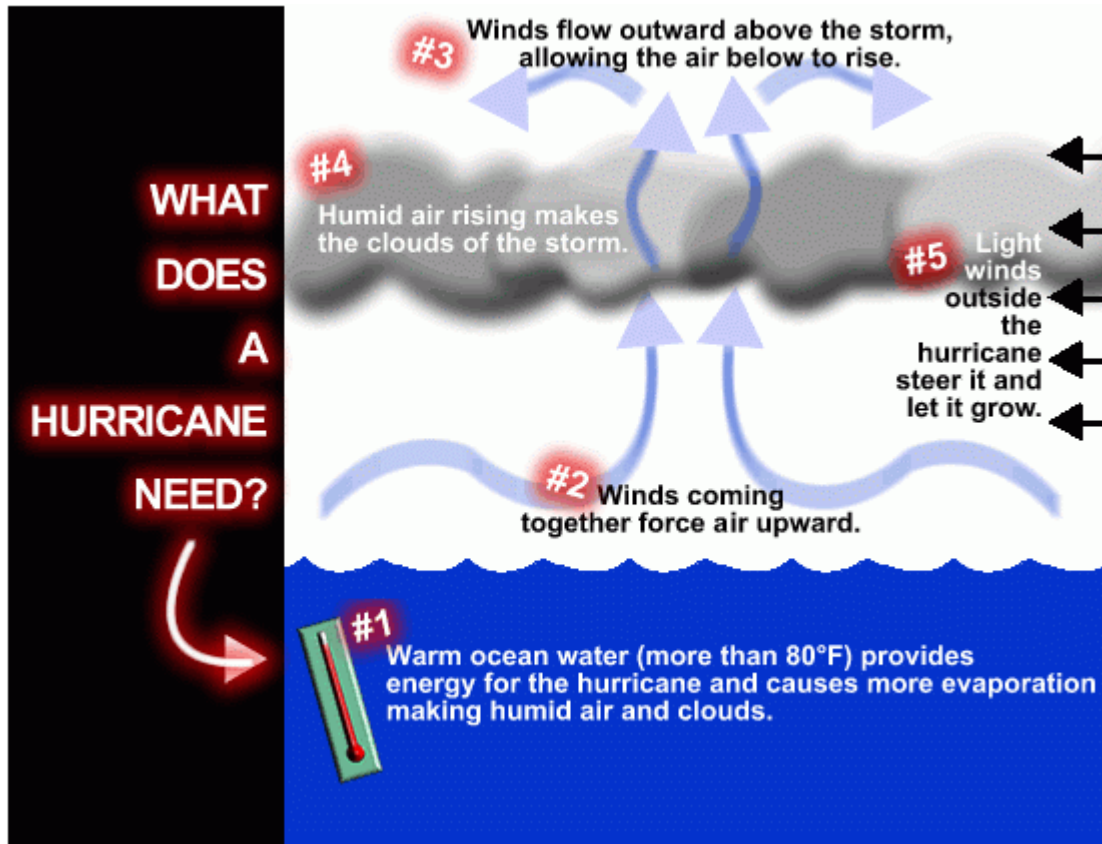
Historic Tropical Cyclone Frequency



- Each year, an average of 10 tropical systems develop over the Atlantic Ocean, Caribbean, and Gulf of Mexico.
- Roughly 6 of those storms intensify to become hurricanes each year.
- Around 5 hurricanes (2 being major hurricanes) strike the United States coastline over a 3 year period.



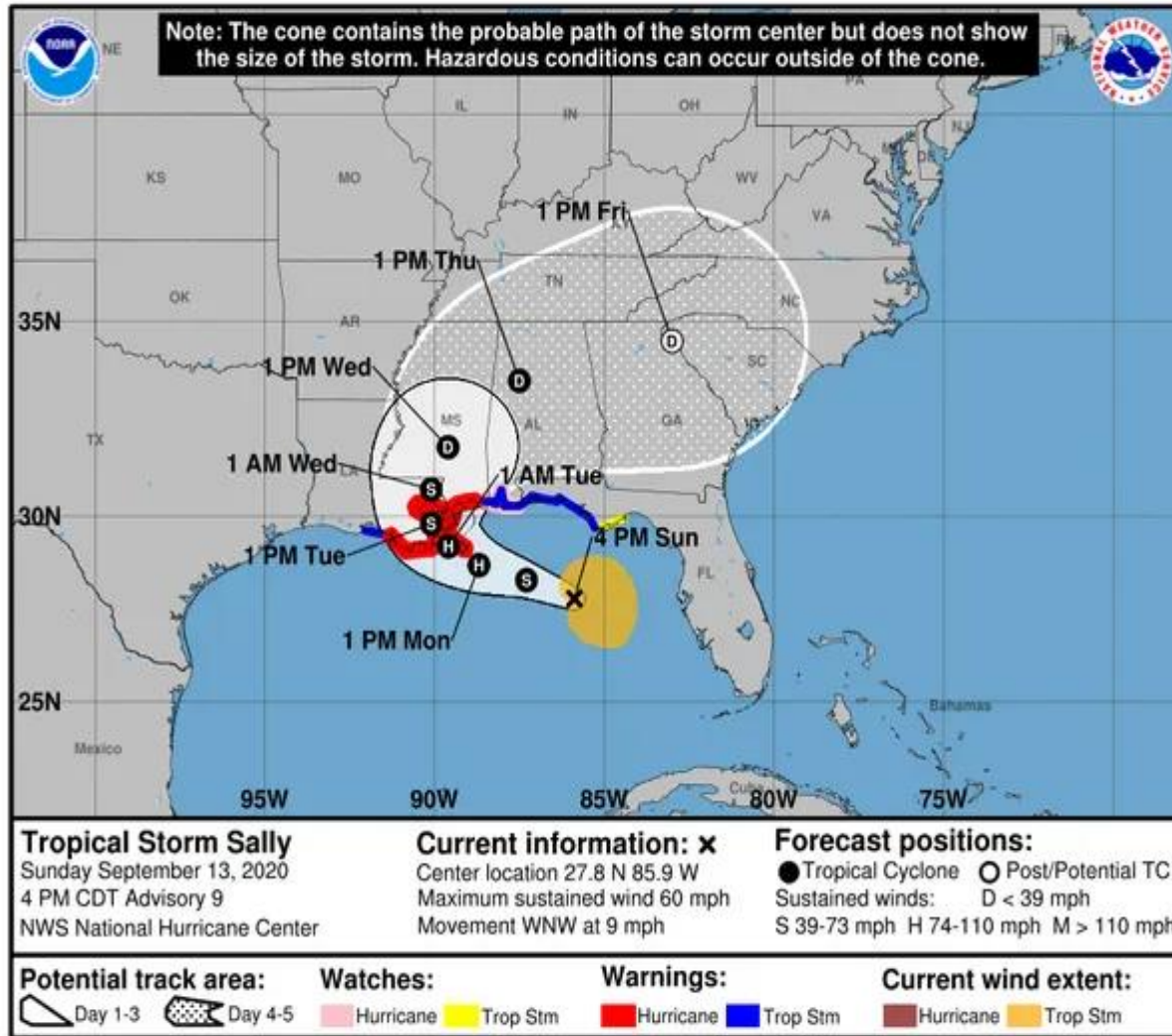
Hurricane Formation



- Many hurricanes begin as a wave of thunderstorms moving westward across Africa.
- Storms are generally 300 miles wide but can be up to 1000 miles.
- A typical eye wall ranges from 20-30 miles across.



Hurricane Forecasting



National Hurricane Center's forecast cone show's possible storm center path.

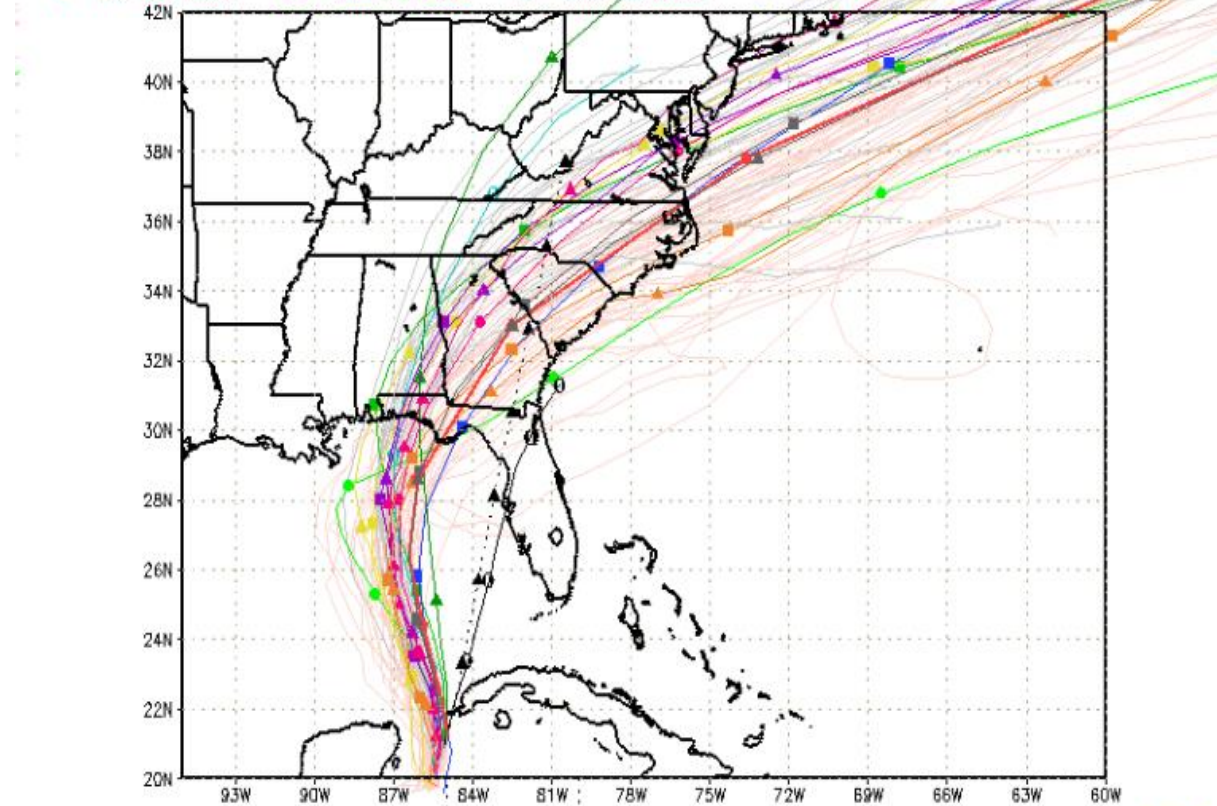
Rain bands can cause localized heavy rains/flooding as well as tornadic activity.

Right side with respect to movement is generally the area of worst weather.



Forecast Challenges

---▲--- XTRP 08/1200Z ○ CLP5 08/1200Z ▲ HMON 08/0600Z ▲ AVNO 08/0600Z ▲ ECMF 08/0000Z
■ TVCN 08/1200Z ▲ TABD 08/1200Z ▲ HWRP 08/0600Z ▲ AEMN 08/0600Z ▲ EEMN 08/0000Z
▲ TVCX 08/1200Z ▲ TABM 08/1200Z ▲ UKM 08/0000Z ▲ APxx 08/0600Z ▲ EExx 08/0000Z
● NHC 08/1500Z ● TABS 08/1200Z ○ COTC 08/0600Z ▲ CMC 08/0000Z ▲ GEMN 08/0000Z



Spaghetti Models

- These visualize many different computer simulations for each of the various tropical forecast models.
- Forecasts will become more precise as the storm matures and nears landfall.

storm_14
sfwmd.gov
weather@sfwmd.gov
08-Oct 10:51EDT

NHC Advisories and County Emergency Management Statements supersede this product.
This graphic should complement, not replace, NHC discussions.
If anything on this graphic causes confusion, ignore the entire product.
For full info, see <http://my.sfwmd.gov/sfwmd/common/images/weather/plots.html>





Weather Sources



- 1 SOW Commander has the most specific and up-to-date forecast for Hurlburt Field.
- Local Weather Stations show impacts to the surrounding areas.
- National Weather Stations show much broader scale forecasts but tend to focus on the areas that are anticipating the worst damage.
- **Do not fear Jim Cantore!!!**



Helpful Links



National Hurricane Center

- <https://www.nhc.noaa.gov/>

Mikes Weather Page

- <https://www.spaghettimodels.com/>





Hurricane Sally Damage / Questions



Questions?



Emergency Management Hurricane Preparedness Briefing



**SrA Meredith & SrA Reaves
1 SOCES/CEX**



Overview

- **Hurricane Categories**
- **Hurricane Conditions (HURCON)**
- **Storm Terminology**
- **Storm Surge Affecting HFLD**
- **Hazards Associated with Hurricanes**
- **Mandatory Evacuation History**
- **Individual Military Actions**
- **Family Actions**
- **Supply Kit**
- **Base Shelters and Resources**



Hurricane Categories

Category	Sustained Winds	Types of Damage Due to Hurricane Winds
1	64-82 kt (74-95 mph)	Very dangerous winds will produce some damage: Roof damage, large tree branches snapped, shallow rooted trees toppled, power outages
2	83-95 kt 96-110 mph)	Extremely dangerous winds will cause extensive damage: Roof and siding damage, toppled trees, large near-total power loss is expected for several days to weeks
3 (Major)	96-112 kt (111-129 mph)	Devastating damage will occur: Major damage to homes, trees, and electricity and water may be unavailable for several days to weeks after the storm passes
4 (Major)	113-136 kt (130-156 mph)	Catastrophic damage will occur: Severe damage to homes, power outages will last weeks to months, <i>most of the area will be uninhabitable for weeks or months</i>
5 (Major)	≥ 137kt (≥ 157mph)	Catastrophic damage will occur: High percentage of homes will be destroyed, power outages will last for weeks to possibly months, <i>most of the area will be uninhabitable for weeks or months.</i>



Hurricane Conditions (HURCON)

■ HURCON 5

- 96 Hours from onset of 50kt winds

■ HURCON 4

- 72 Hours from onset of 50kt winds

■ HURCON 3

- 48 Hours from onset of 50kt winds

■ HURCON 2

- 24 Hours from onset of 50kt winds

■ HURCON 1

- 12 Hours from onset of 50kt winds

■ HURCON 1E

- 50kt winds are occurring, hazards may be present

■ HURCON 1R

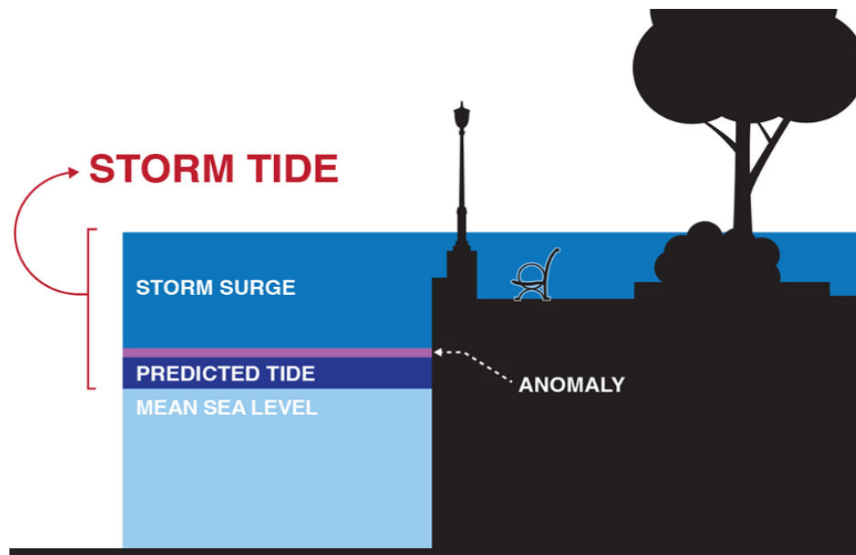
- Storm has passed but hazards may persist. Only emergency responders & damage assessment personnel are released for movement





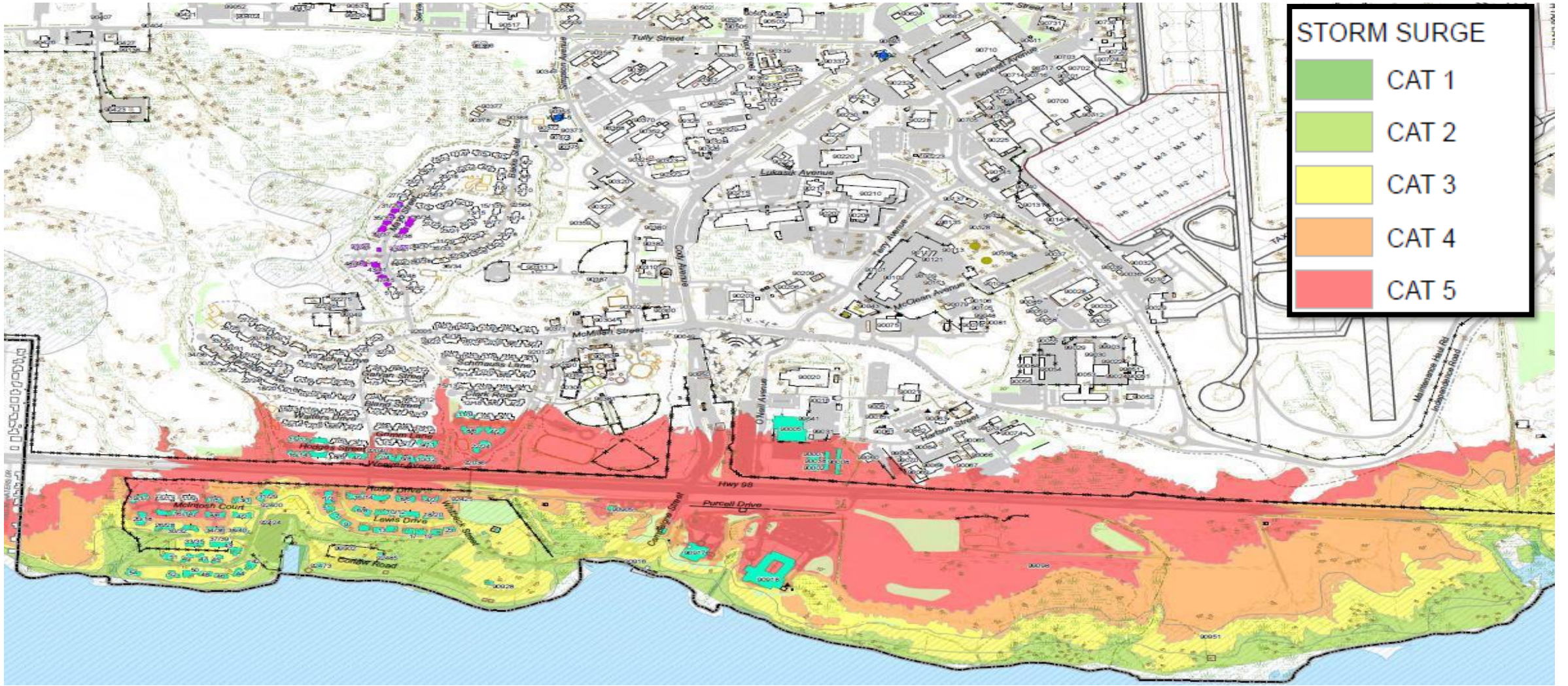
Storm Terminology

- **Storm Surge:** an abnormal rise of water generated by a storm, over and above the predicted astronomical tides
- **Storm Tide:** the water level rise due to the combination of storm surge and the astronomical tide. This rise in water level can cause extreme flooding in coastal areas particularly when storm surge coincides with normal high tide, resulting in storm tides reaching up to 20 feet or more in some cases





Storm Surge Affecting HFLD



Any Time...Any Place



Hazards Associated with Hurricanes



Any Time...Any Place



Mandatory Evacuation History

■ **Hurricane Michael (Tyndall)**

Landfall Oct10, 2018

- **Oct 8 – Aircraft evacuated**
- **Oct 9 – Mandatory evacuation for base personnel and family members**
- **Base destroyed**

■ **Hurricane Dennis**

Landfall July 10, 2005

- **July 8 - Aircraft evacuated**
- **July 9 - Mandatory evacuation for base personnel and family members**
- **July 12 - All aircraft returned**
- **July 12 - Mandatory evacuation status terminated**

■ **Hurricane Ivan**

Landfall Sep 16, 2004

- **Sept 13 - Aircraft evacuated**
- **Sep 14 - Mandatory evacuation for base personnel and family members**
- **Sep 19 - All aircraft returned**
- **Sep 21 - Mandatory evacuation status terminated**
- **Sep 22 - All personnel report for normal duty**



Individual Military Actions

- **Comply with mandatory evacuation orders**
 - *Mandatory means mandatory*
 - **Adhere to specified radius**
 - **Notify unit of evacuation location**
- **Notify family members if you are appointed to the Hurricane Ride-out Team or Aircraft Evacuation Team**
 - **Family members may be required to evacuate without you**
- **Do not return until recalled**




Family Actions

■ PLAN AHEAD

- Create Family Care Plans – see your First Sergeant for help with family care plans (**mil to mil/single mil members**)
- Have a 72 hour “go-bag” that is ready for evacuation, tailored to your family’s needs
- Sign up for your county’s alert notification system and ‘Know your Zone’
 - Okaloosa: <http://www.co.okaloosa.fl.us/ps/emergency-management>
 - Santa Rosa: <https://www.santarosa.fl.gov/666/Emergency-Management>
 - Escambia: <https://myescambia.com/our-services/public-safety/beready>

■ POV: Keep a full tank of gas in it if an evacuation seems likely

- Gas stations may be closed during emergencies; unlikely to pump gas during power outages
- Plan to take one car per family to reduce congestion and delays



is located within:
Hurricane Evacuation Zone: **N**
Not within a Storm Surge Zone
[Open Map](#)

For further information visit the
[Okaloosa County Public Safety website](#) or
call 850-651-7150.



Family Actions Cont.

■ **During Evacuation**

- Plan for severe traffic congestion; leave early enough
- Know safe haven locations
- Know where you are going and how you are getting there, be alert for road hazards such as washed out roads or bridges and downed power lines
- **DO NOT DRIVE INTO FLOODED AREAS**
- Follow recommended evacuation routes, do not take short cuts; they may be blocked

■ **Do not leave your pets behind**

■ **After Evacuation**

- Check with local officials where you're staying and back home before you travel; returning home before storm debris is cleared is dangerous
- Residents returning should expect and prepare for disruptions to daily activities
- Charge devices and consider getting back-up batteries in case power-outages continue
- Fill up your gas tank and consider downloading a fuel app to check for outages along your route (gas buddy, waze, etc.)



Supply Kit

- **Build a disaster supply kit**

- **Plan for 3 to 7 days**

- Non-perishable food
- Water (one gallon per person per day minimum)
- First-aid supplies and any prescription medication
- Portable radio with spare batteries
- Toiletries/hygiene items
- Flashlight with spare batteries
- Money (Cash)
- Important documents
- If you have children or pets make sure to have all necessary items for them as well (bottles, diapers/wipes, etc.)



- **ENSURE YOUR VEHICLE IS FUELED AND SERVICEABLE!!!**

Any Time...Any Place



Shelters and Resources

■ Sheltering

- You can find shelter locations on the Okaloosa, Santa Rosa, and Escambia websites
- Local radio stations
- Pet Friendly Hotels and Motels: www.petswelcome.com

- www.ready.gov
- www.beready.af.mil
- www.nhc.noaa.gov
- www.floridahurricane.net
- <https://community.fema.gov>

■ Accountability

- Ensure you report accountability in AFPAAS when you arrive at your safe haven location



Mobile App

Install the FEMA App, available for Apple, Android, and Blackberry mobile devices.





Questions?

EVERYONE SHOULD
BE READY
... ARE YOU?

AIR FORCE EMERGENCY PREPAREDNESS MOBILE APP

For more information, contact the office of Emergency Management at 884-2560/4304



Office of the Staff Judge Advocate

1st Special Operations Wing

Any Time...Any Place



Natural Disaster Claims Processing

- People living in base housing can file with the Air Force Claims Service Center
 - <https://claims.jag.af.mil/>
- File with renters, homeowners, or vehicle insurance first
- May file for deductible- but no guarantee of reimbursement



What is Covered?

- **Personal property including food spoilage, vehicle damage; standard depreciation is applied; payment limitations on certain items**
- **Claimants must first file with private insurer unless damage is less than deductible**
- **Claimant must itemize/breakdown food loss**
- **Partial payments may be authorized**
- **Request funding as required**



Pre-disaster Preparation Tips

- **Power outages: Set refrigerators on highest setting**
- **Floods: Avoid parking or driving in low-lying areas and elevate items from floor in residence**
- **Shelters: open to off base personnel, but primarily for on-base; damages are not incident to service unless they were ordered there**



Questions for Legal?



Finance

Any Time...Any Place



Overview

- **Evacuation Types**
- **Evacuation Order**
- **Evacuation Entitlements**
- **TDY Orders**



Evacuation Types

- **Wing Commander gives the order to evacuate**

- **Voluntary Evacuation**
 - **Release non-mission critical personnel**
 - **Liberal leave for civilians**
 - **No reimbursement**

- **Recommended Evacuation**
 - **Release non-mission critical personnel**
 - **Administrative leave for civilians (Non-Chargeable)**
 - **No reimbursement**



Evacuation Order

- **Mandatory Evacuation (can be limited)**
 - **Mission critical personnel in duty status during evacuation**
 - **Non-mission critical personnel administrative leave (DoD Civilian/NAF)**
 - **Some costs reimbursable (Mileage, lodging, and meals)**

- **Members are only entitled to the funds named in this briefing if a mandatory evacuation is ordered**

- **When evacuation order is given, the authorized Safe Haven Locations will be contained in Battlestaff directive**



Evacuation Entitlements

- **Member's duty status must be covered**
 - **On Duty**
 - **TDY**
 - **PCS**
 - **Leave**
 - **Members on leave (outside of the local area) will remain in leave status**

- **Entitlements are effective the date evacuation order is given**
 - **Member/dependent not entitled to reimbursement for early departure**
- **Entitlements cease on the date evacuation is terminated**
- **All ordered to evacuate (military dependents/civilian family members) receive:**
 - **Mileage (Per vehicle) \$.56/mile (a/o 1 Jan 21)**
 - **Lodging**
 - **Daily Meal Rate**



Evacuation Entitlements Continued

■ **Lodging**

- **Reimbursed based on rate at the safe haven location**
 - **If location is not listed in per diem tables, rate is \$96 (FY 21)**
 - **Actual Expense Allowance (AEA) is not authorized**
- **Maximum lodging is equal to combined max lodging of all travelers**
- **(Example) Evacuate to Atlanta . Hotel room \$240.00/night.**
 - **Member auth. \$151.00 max lodging**
 - **Spouse auth. \$151.00 Max lodging**
 - **Combined auth. covers cost of hotel (You do not get to keep the difference)**
- **Hotel tax is a reimbursable expense not included in max lodging rate.**



Evacuation Entitlements Continued

■ Meal Rate

- Reimbursed based on rate at the safe haven location
 - First and last day of travel, 75% of rate will be paid regardless of time of departure**
 - If location is not listed in per diem tables, rate is \$50**
 - Dependents age 12 and over receive 100% of member's rate**
 - Dependents under 12 receive 50% of member's rate****

- Use of Government Travel Card (GTC) is authorized**
- Advances available for members who do not have a GTC:
 - Orders must state advance is authorized and letter from Commander or First Sergeant required**
 - Date, time and place of issuance TBD by Battlestaff Directive****



Evacuation Entitlements Continued

■ Expenses not reimbursed

- Lodging while staying w/friends or relatives
- Pet-related expenses (boarding, kennels, transport)
- Home preparation expenses
- Automobile expenses – FUEL, repair, maintenance, oil, etc. (covered by mileage/incidentals)
- Actual grocery expenses (covered by per diem)
- Non-official calls
- ATM Fees for personal credit/debit cards
- Local mileage

■ Expenses reimbursed

- Lodging not to exceed rate for safe haven area
- Lodging taxes
- ATM Fees (GTC only)
- Official Phone calls (must be approved by approving official)



Post Hurricane

- **“All Clear” is not official termination of evacuation**
- **Members must contact chain of command prior to moving from safe haven**
- **Installation Commander terminates evacuation**
- **Units contact their members with RNLT date and time**
- **Dates, times and locations for group-processing of travel vouchers will be set up and announced in Battlestaff Directive**



Questions for Finance?



1st Special Operations Wing Public Affairs

344 Tully St. Bldg 90340

850-884-2729

850-884-7196



**SrA Dennis Spain
1 SOW/PA**



Our Role

- **Public Affairs will:**
 - **Post the most current information regarding hurricane preparedness.**
 - **Share the 1st SOW Commander's Facebook updates in the event of a hurricane.**
 - **Update Hurlburt Field Facebook and Twitter page with relevant information.**
 - **Maintain the Hurlburt Field website with current hurricane information.**
 - **Offer references for further information from outside organizations.**



1st SOW Commander Facebook page

1st SOW Commander | Facebook

facebook.com/1.SOW.Commander

Search Facebook

Manage Page

1st SOW Commander

Page

Updates
97 new

Inbox
42 new comments

Business App Store

Resources & Tools

Appointments

Manage Jobs

Notifications
14 new

Insights

Publishing Tools

Ad Center

Page Quality

Edit Page Info
1 new

Settings
1 new

Promote

Face Coverings Mandatory on Hurlburt Field

Wash Hands Often

Practice Physical Distancing

PROTECT THE TEAM!

1st SOW Commander
@1.SOW.Commander · Government Official

Home Shop About Photos More

Create Ad
How would you like to grow your business?

Get More Website Visitors

Boost a Post

Automated Ads
Get personalized ads that adjust over time to help you get better results.

Free Facebook Business Tools

Add Appointment Bookings
Display your services and availability so that people can...

Host Paid Online Events
Create online events that people

Create Post

Photo/Video Get Messages Feeling/Activity

Create Live Event Offer Job

1st SOW Commander
Published by Lynette Rolan · 3h ·

Today we remember a crew from the 8th SOS, who in 2010 perished when their CV-22 crashed in Afghanistan on a routine mission. The accident resulted in the deaths of two Air Force members, an Army Ranger, and a civilian, while injuring 16 of 20 personnel on board. We will never forget Major Randell D. Voas and Senior Master Sergeant James B. Lackey from the 8th Special Operations Squadron.

"Our debt to the heroic men and valiant women in the service of our country can never ... See More

Any Time...Any Place



1st SOW Commander Instagram page

A screenshot of a web browser displaying the Instagram profile for '1_SOW_CC'. The browser's address bar shows 'instagram.com/1_sow_cc/'. The Instagram interface includes a search bar, navigation icons (home, messages, camera, heart, profile), and the profile header for '1_SOW_CC' with 'Edit Profile' and a gear icon. The profile statistics show '88 posts', '688 followers', and '9 following'. The bio identifies 'Col Jocelyn Schermerhorn' as a 'Government Official' and '1st SOW Commander' located in 'Hurlburt Field, FL'. Below the bio are two circular profile pictures of other users: 'K9 Vetera...' and 'Gen. Van ...'. The main content area shows a grid of posts under the 'POSTS' tab. The first row contains three posts: a portrait of a man in a military uniform, a man in a military uniform wearing a blue face mask, and a graphic with a gold star and the text 'GOLD STAR SPOUSES'. The second row shows the beginning of three more posts: a floral graphic with 'MONTH OF THE', a dark image with a white silhouette, and a photo of a wooden shelf.

Any Time...Any Place



Hurlburt Field Facebook Page

HPCON B

TRAVEL
Please check with your chain of command regarding specific leave, PCS and TDY guidelines.

WHEN TO WEAR A FACE COVERING
Mask wear is mandatory while on the installation. Please see [Hurlburt Field Face Mask](#)

HF STATUS
Base is open to all DoD ID card holders.
For Hurlburt Field updates, go to: [www.hurlburtfield.mil](#)

Hurlburt Field
@HurlburtFieldOfficial · Military Base

Earn Money by Hosting a Paid Online Event
Try teaching, performing or doing a Q&A. Keep 100% of the revenue you earn (minus applicable taxes) through June 2021.

Create Ad
How would you like to grow your business?

Create Post
Photo/Video Get Messages Feeling/Activity

Hurlburt Field
Published by Dennis Spain · 23h ·
Being an Air Commando is a mindset. But what does that look like?
Hear some of our finest Air Commandos give their take on the topic.
[#AirCommandoMindset](#)

Any Time...Any Place



Hurlburt Field Twitter page

(19) Hurlburt Field (@Hurlburt_Field) x +

twitter.com/Hurlburt_Field

Home
Explore
Notifications
Messages
Bookmarks
Lists
Profile
More

Hurlburt Field ✓
@Hurlburt_Field
2,492 Tweets

Hurlburt Field ✓
@Hurlburt_Field
Official site for Hurlburt Field. (following, rts & likes ≠ endorsement)
Florida hurlburt.af.mil Joined November 2011
217 Following 5,646 Followers

Pinned Tweet

Hurlburt Field ✓ @Hurlburt_Field · Jan 12
The 1st SOMDG has received the COVID-19 vaccine. 📄

Read more here:

Hurlburt Medical Group Receives COVID-19 Vaccine

You might like

- Prime Video ✓ @PrimeVideo Follow
- Armament Directorate @AfWeap... Follows you Follow
- Air Force Assistance... @AF_Assst... Follows you Follow

What's happening

News · 5 hours ago
Bus hijacked by protesters and set alight on sixth night of unrest in Northern Ireland

#Rebel
Premieres TONIGHT 10|9c on ABC
Promoted by Rebel

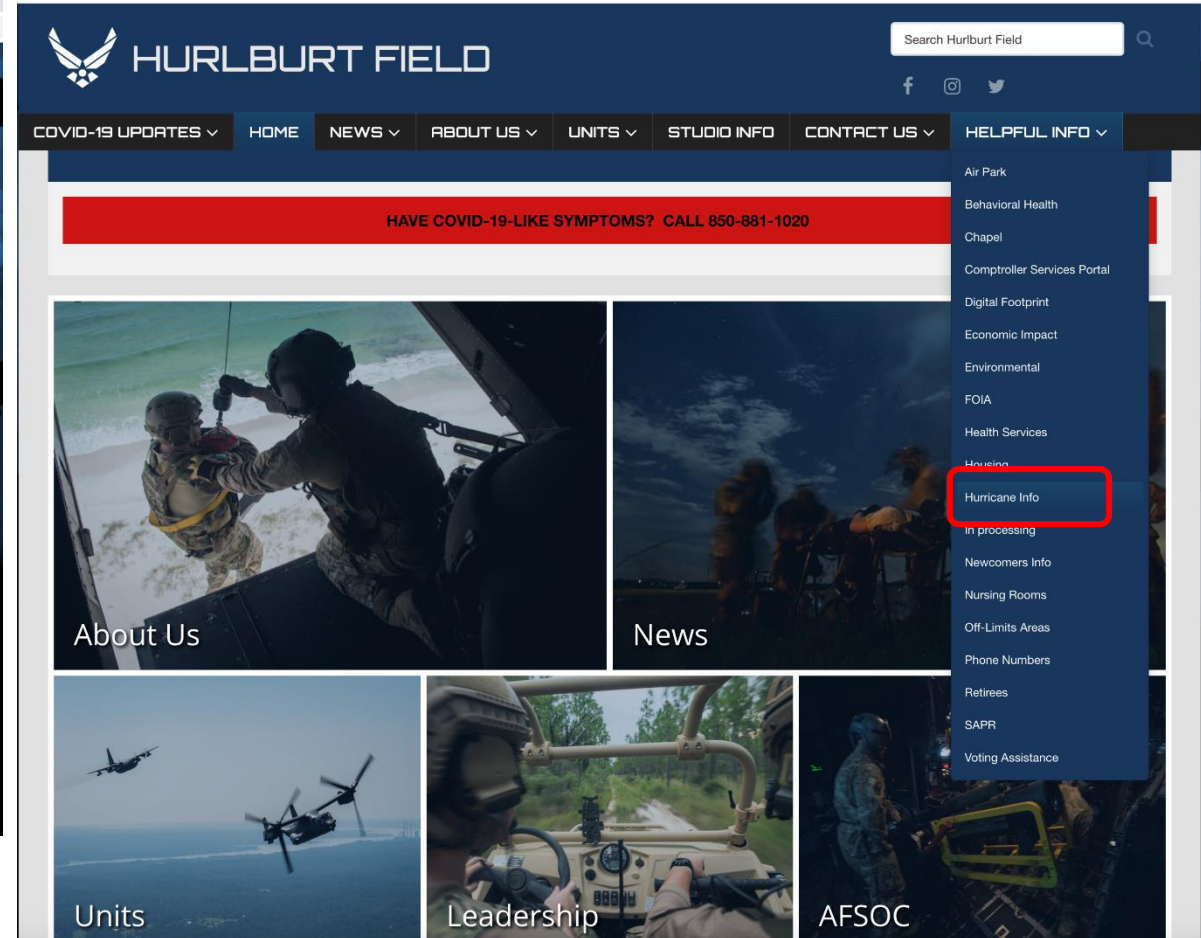
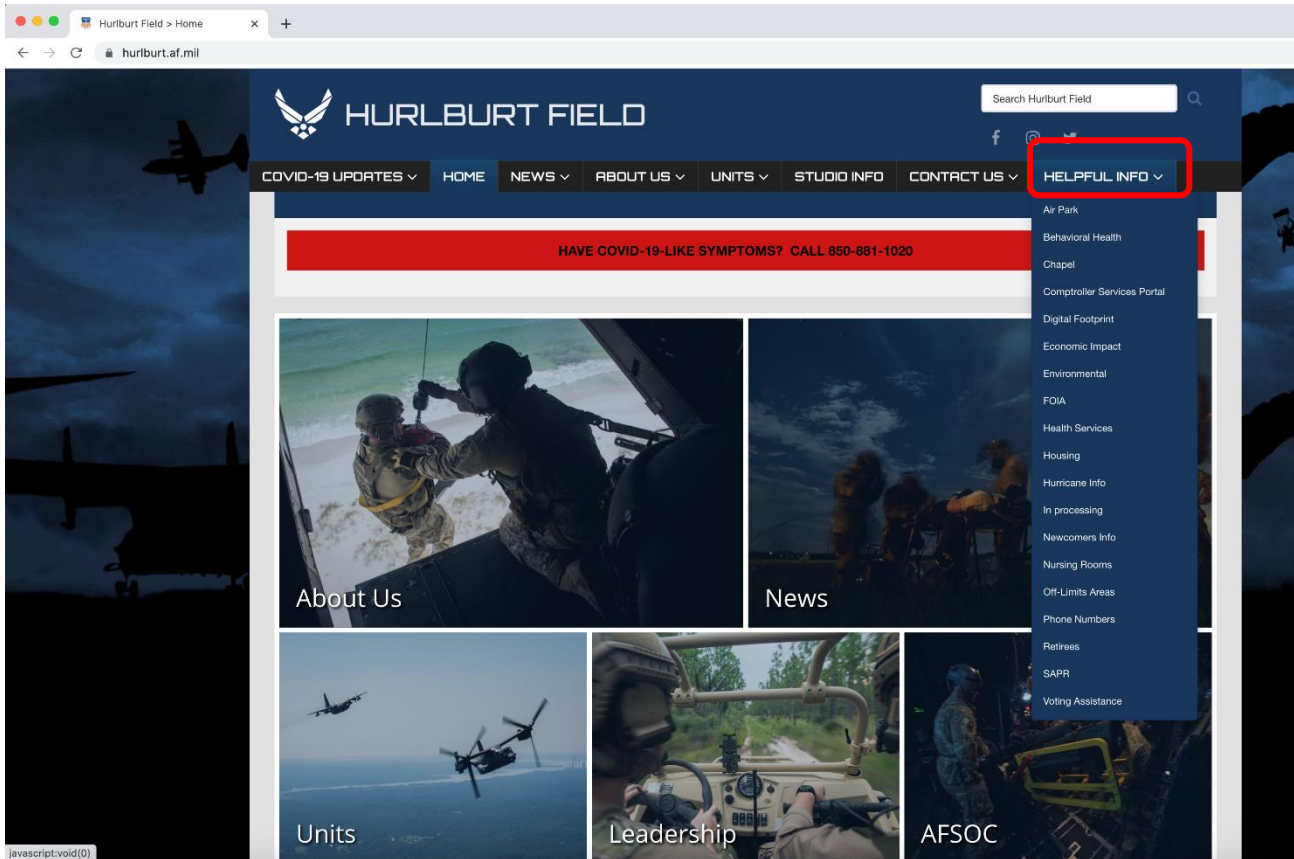
Trending in United States
Howard Dean
4,857 Tweets

Messages

Any Time...Any Place



Hurlburt Field Website



Any Time...Any Place



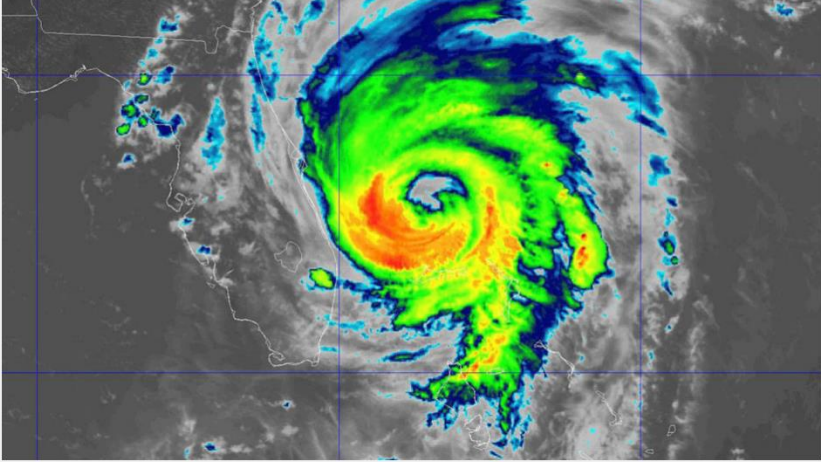
Hurlburt Field Website cont.

Hurlburt Field

COVID-19 UPDATES ▾ HOME NEWS ▾ ABOUT US ▾ UNITS ▾ STUDIO INFO CONTACT US ▾ HELPFUL INFO ▾

HOME > HELPFUL INFO > HURRICANE INFO

HURRICANE PREPAREDNESS



Newsletters

- [2020 Hurricane Town Hall Briefing](#)
- [2020 QTR 2 Newsletter](#)
- [2020 Hurricane Preparedness Letter](#)
- [2020 Evacuation Entitlements Tri-Fold](#)

Resources

- [Hurricane health and safety](#)
- [Red Cross hurricane information](#)
- [Okaloosa County Hurricane Guide](#)

EMERGENCY INFORMATION

Welcome to the Hurlburt Field hurricane information page! When a tropical storm or hurricane has its eye on the Emerald Coast, come here for the latest information. There are also several resources to help you before, during and after a storm hits. Remember that planning is vital to the safety of you and your family. Don't wait until the last minute when a storm is in the Gulf of Mexico to begin preparing. (Graphic courtesy of NOAA)

For assistance after the storm:
Airman and Family Readiness Center toll free number: 1-877-571-7209

For additional information:

Any Time...Any Place



Helpful information

Up-to-date emergency weather information Airman & Family Readiness Center toll free number: **1-877-571-7209**

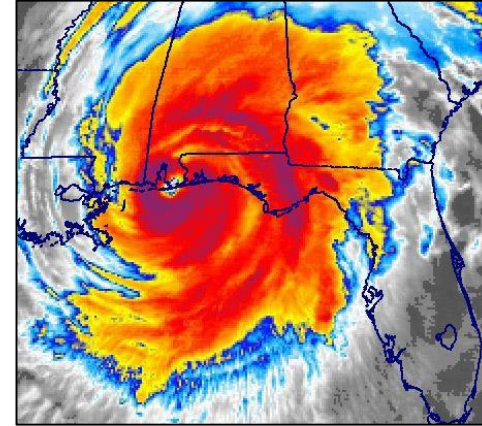
Hurlburt Field information line:
850-884-6736

Air Force Personnel Center 24-hr information line:
1-800-435-9941

For additional information:

County information - Public Safety web pages at:
<http://www.co.okaloosa.fl.us/ps/emergency-management>

- Stay tuned to local radio stations



- Federal, state & county info
- Pet information
- Weather resources
- Non-government agencies
- Hurricane conditions
- Evacuation shelters
- Preparedness information
- Emergency management newsletters



Questions for PA?



Operations Security (OPSEC)

Any Time...Any Place



- **What is OPSEC? Protection of critical unclassified information and indicators**
- **In the event of an evacuation, that includes information such as**
 - **Names:**
 - **Operational:** Which squadrons or members are evacuating?
 - **Personal:** Who is traveling with you if you evacuate?
 - **Dates:**
 - **Operational:** When are the members and aircraft departing?
 - **Personal:** How long will you be away from your home?
 - **Times:**
 - **Operational:** How long will the members and aircraft be away from Hurlburt Field?
 - **Personal:** When do you plan to leave and return?
 - **Locations:**
 - **Operational:** Where are the aircraft going?
 - **Personal:** Where will you be staying in the event of an evacuation?
 - **Other:**
 - **Operational:** How many members and aircraft are leaving?
 - **Personal:** Location and amount of supplies stored in your home
- **Be cognizant of potential negative impacts if in the wrong hands.**





How can you protect yourself?

- **Watch what you and your family post on social media**
 - **80% of information can be found online**
 - **Adversaries monitor open source & personal profiles for information**
- **Countermeasures**
 - **Adjust privacy settings**
 - **Limit friends to people you know personally**
 - **Use strong passwords**
 - **Do NOT post mission details**
- **Most importantly, share this information and educate spouses, children, significant others, etc!**





Why is OPSEC Important?

- **Examples of Critical Information**
 - Number of personnel and families leaving the area
 - Location/status of assets
 - Timing of assets moving back into the area
- **Why Protect Critical Information?**
 - Pieces of information could reveal classified information
 - Could lead to loss of life and/or assets
 - Could have impact on mission success

Protecting Critical Information = Protecting Life, Mission, & Assets





OPSEC Summary

- **DO:**

- **Brief Family Members**
- **Keep mission details to yourself**
- **NEED TO KNOW ONLY!**



- **DO NOT:**

- **Discuss what assets or personnel are staying behind**
- **Transmit Personally Identifiable Information (PII) unencrypted**
- **Share images or details of aircraft or loved ones being evacuated**



Questions?

1 SOW OPSEC Team

Director, Info Ops

884-6087



Deputy Director, Info Ops

884-5829

OPSEC Signature Managers

884-4565

Air Commandos... QUIET PROFESSIONALS

Any Time...Any Place



Corvias Hurlburt Housing

Any Time...Any Place



Q&A – Residents Residing in Hurlburt Housing

Q: Who will notify the residents if Hurlburt has a mandatory evacuation?

A: Residents will be notified through Hurlburt Leadership.

Q: Do I need to purchase Renters Insurance?

A: Absolutely! Renters Insurance is an extremely valuable asset to have. Corvias has insurance coverage for the homes themselves but does not cover the content inside the home. We recommend calling different companies to compare rates. Please be advised that once an imminent threat has been issued for your area, insurance companies can no longer update or issue insurance policies. This goes for renters, auto and homeowners insurance.



Q&A – Residents Residing in Hurlburt Housing

Continued

Q: Where can I put my pets if I can't take them with me?

A: If you are unable to take your pet(s) with you during an evacuation, do not leave them at home, but rather find a safe place for them such as a boarding facility or vet clinic. Many hotels in the area will accept pets during special circumstances. We suggest calling around and making a list for future reference. Check out www.petswelcome.com.

Q: Will I still be paying BAH if my home becomes uninhabitable?

A: No. If your home becomes uninhabitable, we will not receive BAH.



Q&A – Residents Residing in Hurlburt Housing

Continued

Q: What are steps I need to take to protect my belongings?

A: All outside items should be secured so they do not fly around. We recommend all large items such as trampolines, picnic tables, etc. be turned over and secured and smaller items placed in outside storage or inside the home.

Q: My spouse is deployed and I cannot move any belongings myself. What do I do?

A: If unable to properly secure outdoor items, you should work thorough the service members First Sergeant to make arrangements for assistance. While our maintenance team will make themselves available to help to the greatest extent possible, their availability will be limited as they prepare the neighborhood during an actual event.



HURRICANE PREPAREDENESS

HURCON4

Destructive winds are POSSIBLE within 72 hours.

Corvias
PROPERTY MANAGEMENT

We are closely tracking the path of the hurricane and at this point meteorologists are uncertain where or if it will make landfall. The installation commander has determined we are now in HURCON4, destructive winds are possible within the next 72 hours.

NOW IS THE TIME TO MAKE SURE YOU HAVE EVERYTHING THAT YOU NEED.



PREPARE FOR THE STORM



- Water
- Non-perishable food
- Non-electric can opener



- First aid kit, medicines and prescriptions
- Toiletries and hygiene items
- Flashlights and batteries



- Battery-operated radio
- Cash (banks and ATMs may not be open)
- Pet care items



We recommend that you fill your car's tank with fuel and charge your electronic devices.

Please make sure you are following your installation's website for the most up-to-date information on the hurricane's path.



Immediately secure all outdoor items such as trampolines, trash cans, grills, furniture, swings, kiddie pools, basketball goals and toys.



Bring all pets indoors.

PREPARE YOUR HOME



Remove trampoline safety fencing and flipping all trampolines upside down.



Raise items in the garage off the floor. With high volumes of wind and rain, garage floors can take on water.

Corvias Property Management pledges to be here for you as the hurricane approaches and through the duration of the storm. Rest assured that we will work to repair any damage and resume normal operations as soon as possible once the storm has passed.

*Thank you and be safe,
Corvias Property Management Team*



HURRICANE PREPAREDNESS

HURCON3

Destructive winds are POSSIBLE within 48 hours.

Corvias
PROPERTY MANAGEMENT

The hurricane has made significant changes and we continue to monitor its projected path. The installation commander has determined we are now in **HURCON 3** and destructive winds are possible within the next 48 hours.



Immediately secure all outdoor items such as trampolines, trash cans, grills, furniture, swings, kiddie pools, basketball goals and toys.



Remove trampoline safety fencing and flipping all trampolines upside down.

PREPARE YOUR HOME



Bring all pets indoors.



Raise items in the garage off the floor. With high volumes of wind and rain, garage floors can take on water.



Charge all electronic devices and fill your car's tank with fuel.



PREPARE FOR THE STORM

Corvias Property Management encourages residents to purchase or gather the following items:



- Water
- Non-perishable food
- Non-electric can opener



- First aid kit, medicines and prescriptions
- Toiletries and hygiene items
- Flashlights and batteries



- Battery-operated radio
- Cash (banks and ATMs may not be open)
- Pet care items



The base-wide broadcasting system may be used to make important announcements. For a list of shelters or for more information about the storm, check the installation's website, local radio and television stations.

Corvias Property Management pledges to be here for you as the hurricane approaches and through the duration of the storm. Rest assured that we will work to repair any damage and resume normal operations as soon as possible once the storm has passed.

*Thank you and be safe,
Corvias Property Management Team*

HURLBURT FIELD



HURRICANE PREPAREDNESS

HURCON2

Destructive winds are ANTICIPATED within 24 hours.

Corvias
PROPERTY MANAGEMENT

The installation commander has determined we are now in **HURCON 2**. The hurricane is approaching, and destructive winds are anticipated within the next 24 hours. Conditions can change very quickly and it's imperative that you are prepared for the impending storm.

PLEASE FOLLOW THE BELOW INSTRUCTIONS TO ENSURE YOUR SAFETY:



Immediately secure all outdoor items such as trampolines, trash cans, grills, furniture, swings, kiddie pools, basketball goals and toys.

PREPARE YOUR HOME



Bring all pets indoors.



Raise items in the garage off the floor. With high volumes of wind and rain, garage floors can take on water.



Remove trampoline safety fencing and flipping all trampolines upside down.



Children and pets should not play in any accumulating water, especially near storm drains. Do not attempt to drive or walk to the Corvias Community Office during the storm.



If you need to reach a member of the Corvias Property Management team, we will be operating a centralized call center for emergencies. The call center may be reached at **850-344-0251**.



DURING THE STORM, WE ASK THAT YOU ONLY REPORT MAINTENANCE EMERGENCIES.

An emergency includes sparking electrical lines, overflowing sewers, interior flooding and shattered glass. Power and water outages are not considered a maintenance emergency and frequently occur because of hurricanes and tropical storms.

We recommend gathering a flashlight, batteries, battery-operated radio and other necessary supplies as soon, and as safe, as possible. We recommend that you fill your car's tank with fuel and charge your electronic devices.



The base-wide broadcasting system may be used to make important announcements. For a list of shelters or for more information about the storm, check the installation's website, local radio and television stations.

Corvias Property Management pledges to be here for you as the hurricane approaches and through the duration of the storm. Rest assured that we will work to repair any damage and resume normal operations as soon as possible once the storm has passed.

*Thank you and be safe,
Corvias Property Management Team*



HURRICANE PREPAREDNESS

HURCON1

Destructive winds are IMMIDENT within 12 hours.



The installation commander has determined we are now in **HURCON 1**. The hurricane is imminent and destructive winds are anticipated within the next 12 hours.



THE CORVIAS COMMUNITY OFFICE IS NOW CLOSED AND WILL REOPEN WHEN IT IS SAFE TO DO SO.

If you evacuate or plan on leaving your home, call the office to let us know and please take your pets with you when you leave the installation.



If you have not done so, secure all outdoor items immediately.

DON'T FORGET



Bring all pets indoors.



Have towels ready in the unlikely event water enters your home.



Do not play or drive in the storm water. This is extremely dangerous.



Stay in contact with your chain of command if you have an emergency.

24x7 SUPPORT

If you need to reach a member of the Corvias Property Management team, we will be operating a centralized call center for emergencies. **The call center may be reached 24/7 at 850-344-0251.** We will respond to maintenance service requests when it is safe for our team to return to the installation.

Please be sure to monitor the installation's website and the Corvias Facebook page for updates.



Corvias Property Management pledges to be here for you as the hurricane approaches and through the duration of the storm. Rest assured that we will work to repair any damage and resume normal operations as soon as possible once the storm has passed.

*Thank you and be safe,
Corvias Property Management Team*



Questions for Corvias?



AFPAAAS

Air Force Personnel Accountability and Assessment System

(POCs are Sq COR and IPR)



What is AFPAAS?

- **The U.S. Air Force Personnel Accountability and Assessment System (AFPAAS) standardizes a method for the Air Force to account, assess, manage, and monitor the recovery process for airmen and their families affected and/or scattered by a wide-spread catastrophic event.**
- **The AFPAAS provides valuable information to all levels of the Air Force chain of command, allowing commanders to make strategic decisions which facilitate a return to stability.**
 - **Natural or man-made disaster...**
 - **Catastrophic in nature...**
 - **Potential for wide spread injury or death to Airmen and families**

Link to website



Where is AFPAAS on the Internet?

<https://afpaas.af.mil/>

What if I do not have access to the Internet?

If you are displaced from your home or office, or do not have access to a computer, you can contact someone with Internet access and ask them to use AFPAAS on your behalf. You can also access AFPAAS from any computer available to you. Alternatively, you can request assistance from local authorities and relief agencies. If you don't have Internet access, call your command representative or one of the telephone numbers below:

Air Force Personnel Readiness Cell
1-800-435-9941

or

1 (210) 565-2020/DSN 665-2020

AFPAAS Help Desk

1-866-946-9183

or

1 (619) 553-8167/DSN 553-8167



Number to Help Desk



U.S. AIR FORCE

If you're unable to access internet, contact your squadron UCC or AFPC to be accounted for



AFPAAS Login Page

ATTENTION: All Users

Due to the impact that the current Pandemic has had on telework capabilities of the user population at large, the PAAS Help Desk Voice mailbox is inaccessible until further notice.

If you have technical difficulties, contact paas@navy.mil.

To access all features available to you, log in with your PIV/CAC.

Insert your PIV/CAC before logging in.

LOG IN WITH YOUR PIV/CAC

OR

Log in with limited access using your username or DoD ID and password.

Username or DoD ID

Password

LOG IN WITH LIMITED ACCESS

[Reset your password](#)

Technical Assistance

Members/Family Members: for assistance call AFPRC at 1-800-435-9941 or Total Force Service Center at 1-800-625-0102.

You may also send an e-mail to paas@navy.mil. Please include your name, phone number and PAS Code (if possible) in order for us to contact you. **Please do NOT include SSN/DOB.**

[Contact AFPAAS Support](#)

This is an Official U.S. Air Force Web Site

[Privacy & Security Notice](#)

SSN and DOB are used by AFPAAS for user login and authentication only. They are sent to AFPAAS in encrypted format. SSN and DOB information already resides in AFPAAS and is not captured and stored from login. They are not displayed in AFPAAS in any form and is not used for any purpose other than U.S. Air Force-approved personnel accountability. Users can change their password from DOB after login by going to the "My Info" page.

Privacy Act Statement

Authority: Title 10 U.S.C. 8013; Air Force Instruction 36-3803, DoDI 3001.02, and E.O. 9397 (SSN), as amended

Purpose: To provide a means of positive identification for the purpose of processing applications or retrieving data.

Routine Uses: None

Disclosure: Voluntary. Failure to provide the requested information may result in a delay or termination of your request.

Privacy Act information is not shared from this system to any other system or user. SSN and DOB information entered into AFPAAS is encrypted and compared with SSN and DOB information residing in Defense Manpower Data Center (DMDC), an Authoritative Data Source for the Department of Defense. SSN and DOB are not displayed in AFPAAS in any form and are not used for any other purpose than U.S. Air Force-approved personnel accountability.

Please read our [Section 508/Accessibility Statement](#)

What is AFPAAS?

Air Force Personnel Accountability and Assessment System (AFPAAS) standardizes a method for the Air Force to account, assess, manage, and monitor the recovery and reconstitution process for personnel and their families affected and/or scattered by a wide-spread catastrophic event. AFPAAS provides valuable information to all levels of the Air Force chain of command, allowing commanders to make strategic decisions which facilitate a return to stability.

AFPAAS allows Air Force Personnel to do the following:

- ☆ Report Accounting Status
- ☆ Update Contact
- ☆ Location Information
- ☆ Complete Needs Assessment
- ☆ View Reference Information

Access with CAC or DoD ID & Password

*Initial PW is sponsor's DOB (Year, Month, Day) and last 4 of SSAN
(Ex: 19910825xxxx)*

For login assistance contact unit COR (Commander's Organizational Representative)

Hawaii April 19, 2021 6:41:07 HST	San Francisco April 19, 2021 9:41:07 PDT	Austin/San Antonio April 19, 2021 11:41:07 CDT	Washington DC April 19, 2021 12:41:07 EDT	ZULU April 19, 2021 16:41:07 UTC	Berlin April 19, 2021 18:41:07 CEST	Jerusalem April 19, 2021 19:41:07 IDT	Iraq April 19, 2021 19:41:07 AST	Korea April 20, 2021 1:41:07 KST
--	---	---	--	---	--	--	---	---

Active Event / Exercise / Announcements

*** ANNOUNCEMENT ***

The AF Crisis Action Team (AF-CAT), on behalf of the AF/A3 directs all Air and Space Force units to terminate accountability efforts for RW21 Winter Storm in the Air Force Personnel Accountability and Assessment System (AFPAAS).

Unit Commanders and Directors are to continue to use normal command channels to account for their personnel. Airmen, Guardians, and families impacted by Winter Storm Uri are to contact their installation Airman and Family Readiness Center for information on agencies and resources for assistance.



The U.S. Air Force Personnel Accountability and Assessment System (AFPAAS) standardizes a method for the Air Force to account, assess, manage, and monitor the recovery process for airmen and their families affected and/or scattered by a widespread catastrophic event. The AFPAAS provides valuable information to all levels of the Air Force chain of command, allowing commanders to make strategic decisions which facilitate a return to stability.

AFPAAS allows Air Force Personnel to do the following:

- ★ Account for Personnel
- ★ Search for Personnel
- ★ View/Edit Contact Location Info
- ★ Real Time & Over Time Reporting

What's New in AFPAAS

*** NEW Password Requirement ***

- New Password Requirements -

To maintain security compliance, AFPAAS has implemented new password parameters to ensure data safety.

Newly updated passwords must now meet the following complexity requirements:

- Must be a minimum of 15 characters
- Must also contain at least one of the following:
 - Uppercase Letter
 - Lowercase Letter
 - Special Character
 - Number

*** NEW Password Requirement ***

*** ATTENTION *** NEW Family Member Requirement *** ATTENTION ***

- Family Member EDIPI/DOD ID Updates -

A new function in the system requires the EDIPI/DOD ID when adding a Family Member to the Full Profile of Active Duty and Reservist family members. If the family member is in DEERS then they have an EDIPI/DOD ID.

Here is how a Sponsor can locate and update family EDIPI/DOD ID's in the 'My Info' tab:

- Login to AFPAAS
- Click on the 'My Info' tab
- Click on 'Contact Information' from the options on the left
- On the far right of the screen it says "for DEERS access click here"
 - Click on the blue "here" link and it will take you to Milconnect

On the Milconnect screen:

- Click on the "I want to" " Update personal contact info."
- A Login screen will appear and login. (on this site DO NOT use the DOD EMAIL cert)

Release Notes

AFPAAS Release Notes for Version 4.63.0

Automated Testing:

- ★ Continuing to implement improved testing procedures for

Useful Links

- ★ Current Warnings and Watches
- ★ National Doppler Radar
- ★ National Hurricane Center
- ★ Today's Weather Map

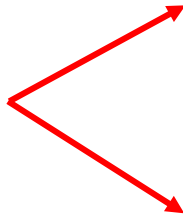
Update data under "My Info"

Need Assistance?
Contact Total Force Service Center at 1-800-525-0102

Commanders, CORs, IPRs, contact Personnel Readiness Cell at 1-800-435-9941



Update all



Air Force Family Information Summary [Help](#)

To see more detail for any section, use the left menu.

Contact Information

Sponsor Name: WOODARD, JONATHAN E (M)	Home Address [Redacted], USA
Phones Home: [Redacted] Work: 8508844429 *Cell: [Redacted] DSN: 579-4429	Email Addresses Primary Email: JONATHAN.WOODARD.4@US.AF.MIL Secondary Email:

Primary Affiliation: Air Force

Designation: AIR FORCE CIVILIAN EMPLOYEES	Country: US	Building:
Paygrade:	State/Province: FL	Floor: Ground Floor/Lobby
Unit: EE0VFDJG - 1 SQJ SQ	ZIP/Postal Code: 325440000	Room:
Sub Org: CCQ		

Family Information

Name	Relationship	Age
No Family Information		

*Preferred Contact method

COR (Commander's Organizational Representative)



Summary

Contact Information

Family Member Info

Affiliation Information

Emergency Contacts

Status Tracker

COR List

User Account

**CORs for EE0VFDJG – 1 SQJ SQ
AIR FORCE, DON CIVILIAN**

ALL – 5 CORs for EE0VFDJG

Showing all 5, sorted A to Z by last name and first name.

TSgt JENNIFER BENENHALEY

JENNIFER.BENENHALEY@US....

GS11 MONIQUE BOLZA

MONIQUE.BOLZA@US.AF.MIL

GS11 BRENT KNAPP

No phone on record
BRENT.KNAPP2@US.AF.MIL

TSgt DEANNA PURVIS

DEANNA.PURVIS@US.AF.MIL

SSgt JABRIEL REYNOLDS

JABRIEL.REYNOLDS@US.AF.MIL

COR (Commander's Organizational Representative)



Summary

Contact Information

Family Member Info

Affiliation Information

Emergency Contacts

Status Tracker

COR List

User Account

Contact Info Click the Edit button to make changes.

Personnel are responsible for maintaining accurate address and contact information in this section. Click the "Edit" button to make changes.

WOODARD, JONATHAN E (M)

*Preferred Contact

Last updated 09-18-2020 by JONATHAN WOODARD

Sponsor: Updated 09-18-2020

Home Address:

Home:

Primary Email: JONATHAN.WOODARD.4@US.AF.MIL

Work: 8508844429

Secondary Email:

Country: USA

Cell:

DSN: 579-4429

DEERS Home Address and Contact Info (as of 04-02-2021)

Data below will be updated within a month with data from DMDC (pulled from DEERS and other Air Force databases).

To login to DEERS, click here.

Home Address:

Home:

Primary Email: JONATHAN.WOODARD.4@US.AF.MIL

Work: 850-881-2055

Secondary Email:

Country: USA

Cell:

DSN:

Work Location

Work Location is now on the Affiliation Information page

Verify Info is Current or Edit Contact Info



Needs Assessment



Personnel Readiness Center: 1-800-435-9941, 210-565-3304/DSN 665-2020

During real world event, a pop up will appear asking if you need assistance

DATA REQUIRED BY THE PRIVACY ACT OF 1974

AUTHORITY: 10 USC 136, Under Secretary of Defense for Personnel and Readiness; 10 USC 3013, Secretary of the Army; 10 USC 5013, Secretary of the Navy; 10 USC 8013, Secretary of the Air Force; DoD Instruction 3001.02, Personnel Accountability in Conjunction with Natural or Manmade Disasters; Air Force Instruction 10-218, Personnel Accountability in Conjunction with Natural Disasters or National Emergencies; Army Regulation 500-3, US Army Continuity of Operations Program Policy and Planning.

PRINCIPAL PURPOSE: To accomplish personnel accountability for DoD affiliated personnel in a natural or manmade disaster or when directed by the Secretary of Defense. This system will document the individuals check-in data. The Military Departments may also collect information about Service members and their dependents for needs assessment as a result of the natural or manmade disaster. The DoD Components may also use accountability data for accountability and assessment reporting exercises.

ROUTINE USES: In addition to those disclosures generally permitted under 5 USC 552a(b) of the Privacy Act of 1974, these records may specifically be disclosed outside DoD as a routine use pursuant to 5 USC 552a(b)(3) as follows:

- To Federal, state, or local governments during actual emergencies, exercises or continuity of operations tests for the purpose of responding to emergency situations or to allow emergency service personnel to locate the individual(s).
- To Federal Emergency Management Agency to facilitate recovery efforts when natural or manmade disasters occur.

The DoD Blanket Routine Uses also apply to this system of records.

DISCLOSURE: Voluntary; however, failure to provide identifying information may impede processing of this application.

NOTE:
If assessment isn't completed, AFPC/DPFFS will not see needs or be able to assist

Personal Information

Survey Date (month/day/year) _____

Name (Last, First, Middle): _____

SSN: _____ Date of Birth (month/day/year): _____

PAS code: _____ Command Name: _____

Current Contact Information

Address/Hotel: _____

Phone: _____ City, State: _____

Email: _____

Fill in the boxes that apply for you and check all applicable boxes

Not Affected Not Sure Need Assistance (Check all that apply. Please choose Not Affected if none apply!)

MEDICAL (Do you or your family need medical help?)

- Need immediate care from a doctor or hospital
- Need medical help or prescription drugs for a chronic illness
- Need help making an appointment for routine needs
- Need information only

Comments:

.....
For additional comments use the bottom of the form.

MISSING FAMILY LOCATOR (Do you need help finding missing family members?)

- Need urgent help finding immediate family member(s)
- My family has been in contact with me, but I need help finding their location
- My family member(s) has/have been in contact with me, but I need help reaching their location
- Need information only

Comments:

.....
For additional comments use the bottom of the form.

TRANSPORTATION TO ONWARD DESTINATION (Do you or your family need help getting to Safe Haven or Permanent Duty Station (PDS)?)

- Need evacuation transportation to safe haven, out of the disaster area
- Need transportation to safe haven or alternate duty location
- Need transportation to return to my duty station
- Need information only

Comments:

.....
For additional comments use the bottom of the form.

**Check category
(19 to choose from)
and the type of
assistance needed**

Link to website



Where is AFPAAS on the Internet?

<https://afpaas.af.mil/>

What if I do not have access to the Internet?

If you are displaced from your home or office, or do not have access to a computer, you can contact someone with Internet access and ask them to use AFPAAS on your behalf. You can also access AFPAAS from any computer available to you. Alternatively, you can request assistance from local authorities and relief agencies. If you don't have Internet access, call your command representative or one of the telephone numbers below:

Air Force Personnel Readiness Cell
1-800-435-9941

or

1 (210) 565-2020/DSN 665-2020

AFPAAS Help Desk
1-866-946-9183

or

1 (619) 553-8167/DSN 553-8167



U.S. AIR FORCE

If you're unable to access internet, contact your squadron UCC or AFPC to be accounted for

Number to Help Desk

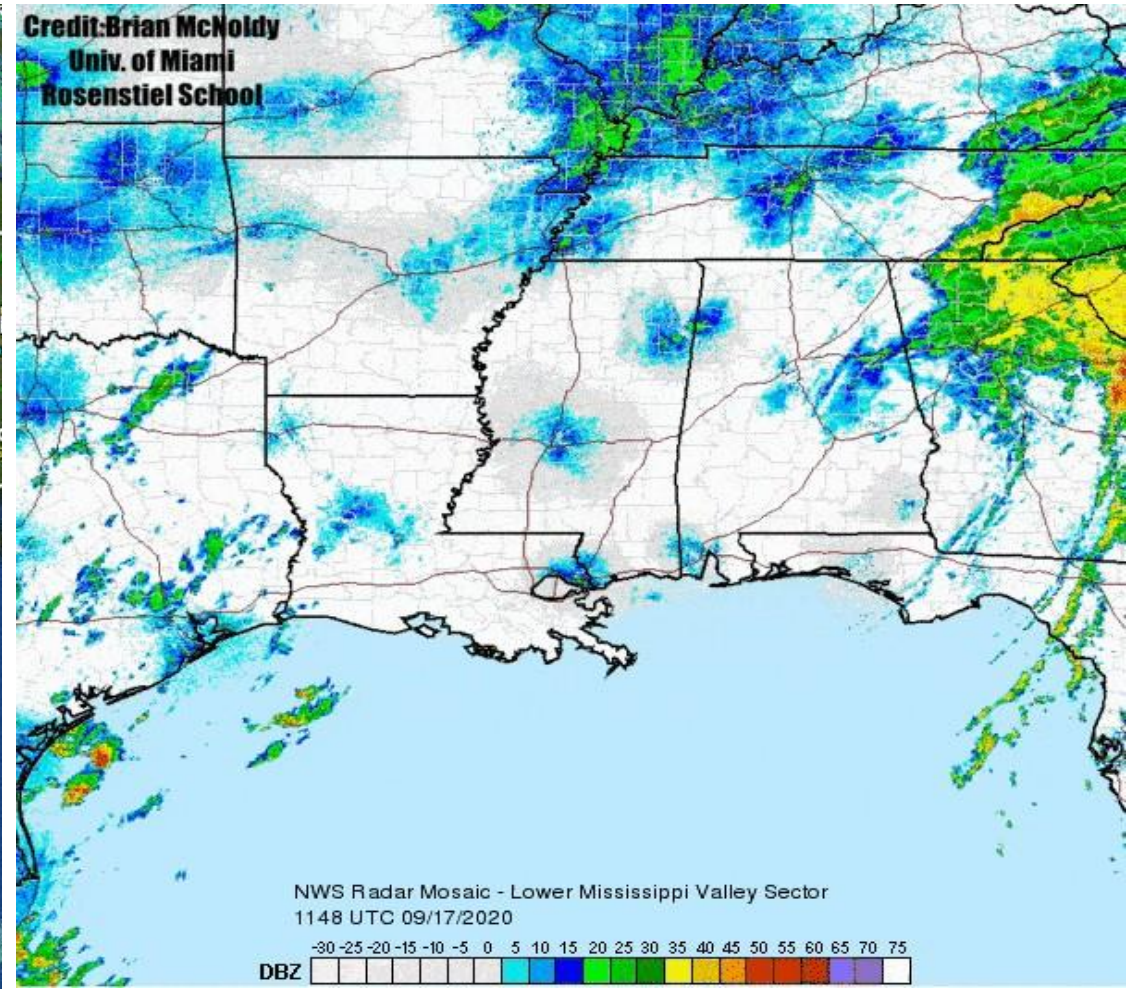
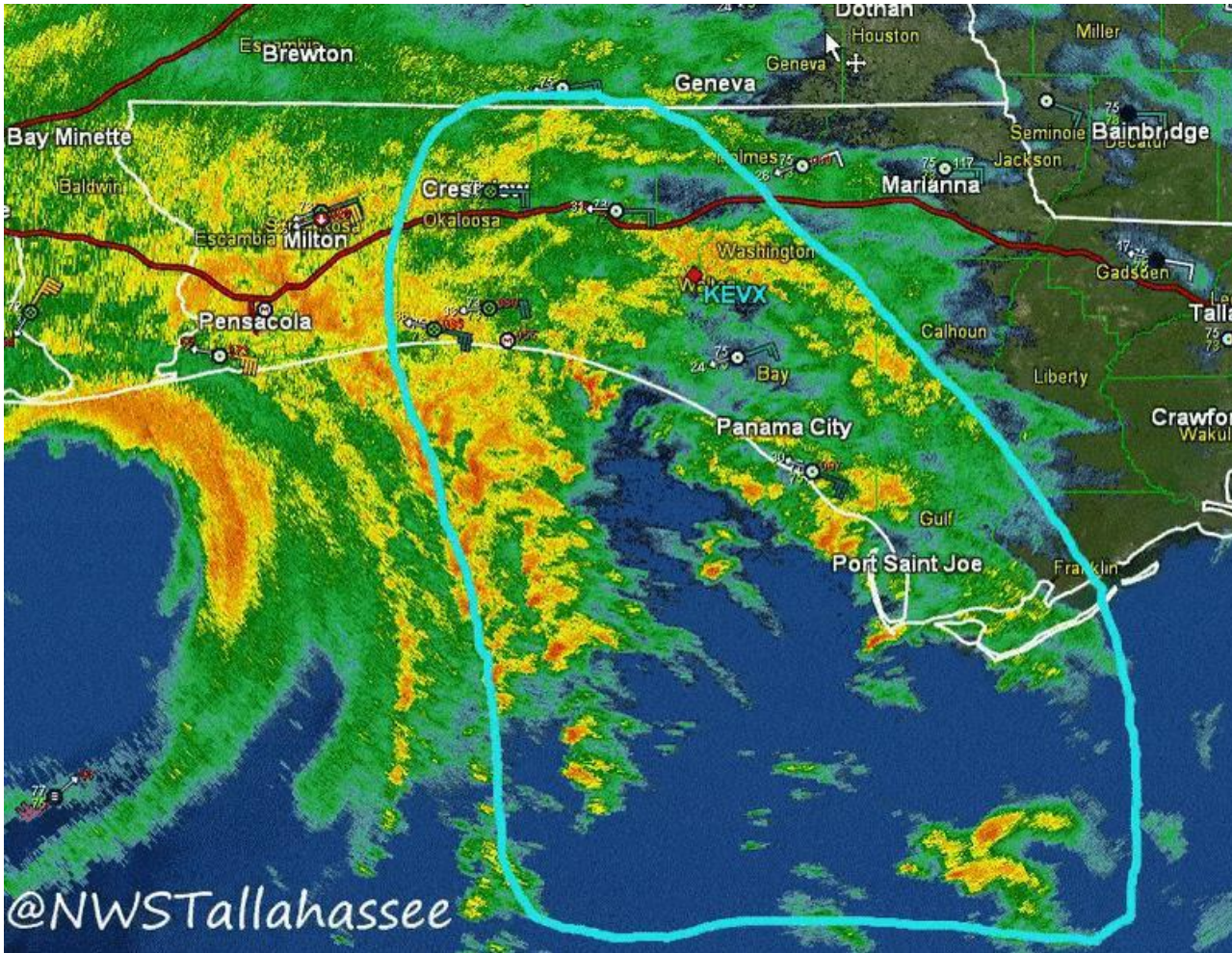


Action Items

- **Set up login procedures, share with spouse or anyone that will use AFPAAS**
- **Update your data under “My Info” as soon as possible**
- **Navigate your way around AFPAAS, become familiar with it**
- **AFPAAS is a self-accounting and self-reporting tool**
 - ***Complete the assessment questionnaire if you need assistance***
- **Keep squadron recall rosters/COR contact info on hand - spouse should know where to find this as well**
 - ***List of CORs (Commander Organizational Reps) can be found under “My Info”***
- **If you’re unable to access <https://AFPAAS.af.mil>, contact unit COR, UCC or AFPC for accountability and assistance**



Hurricane Sally Sep 16, 2020





Questions?



Emergency Family Assistance Center (EFAC)



Airman & Family Readiness Center

Any Time...Any Place



Overview

- Recovery after the storm
- How can the EFAC help?



Recovery After the Storm

- **Stay informed. Call the Airman & Family Readiness Center for immediate help:**
 - **(850) 884-5441 / 5442**
- **Check the Hurlburt Field, 1 SOW CC, & A&FRC Facebook Pages**
- **If you have evacuated, return home only when authorities tell you that it is safe**
- **Be patient. Do not rush. If traveling, expect delays.**
- **Only enter your home once it has been deemed safe by local/base authorities**
- **Check for damage**
- **Begin an inventory on your home**
- **Let squadron and family members know you are safe**



How can the EFAC help you and your family?

■ **Emergency Family Assistance Center**

- When a disaster occurs, the Installation Commander will activate an EFAC to serve as the focal point for victim and family assistance services.
- IAW DoDI 1342.22 and AFI 36-3009, the EFAC serves as the staging area where families can obtain disaster relief, contingency information, and services.
 - EFAC services may be delivered brick and mortar, virtual, or telephonic

■ **The A&FRC will be the focal point for the EFAC**

- Our primary mission is to integrate services that will address the practical and emotional needs of families affected by the disaster
- Refer emergency relief supplies and donations (food, clothing, “comfort” items, etc.)
- EFACs will be staffed, in addition to A&FRC personnel, with representatives from Mental Health, Chapel, Legal, Finance, Public Affairs, Youth Center, and American Red Cross (ARC) as the situation dictates.



Questions?

2020 HURRICANE SEASON

8 U.S. GULF COAST LANDFALLS

